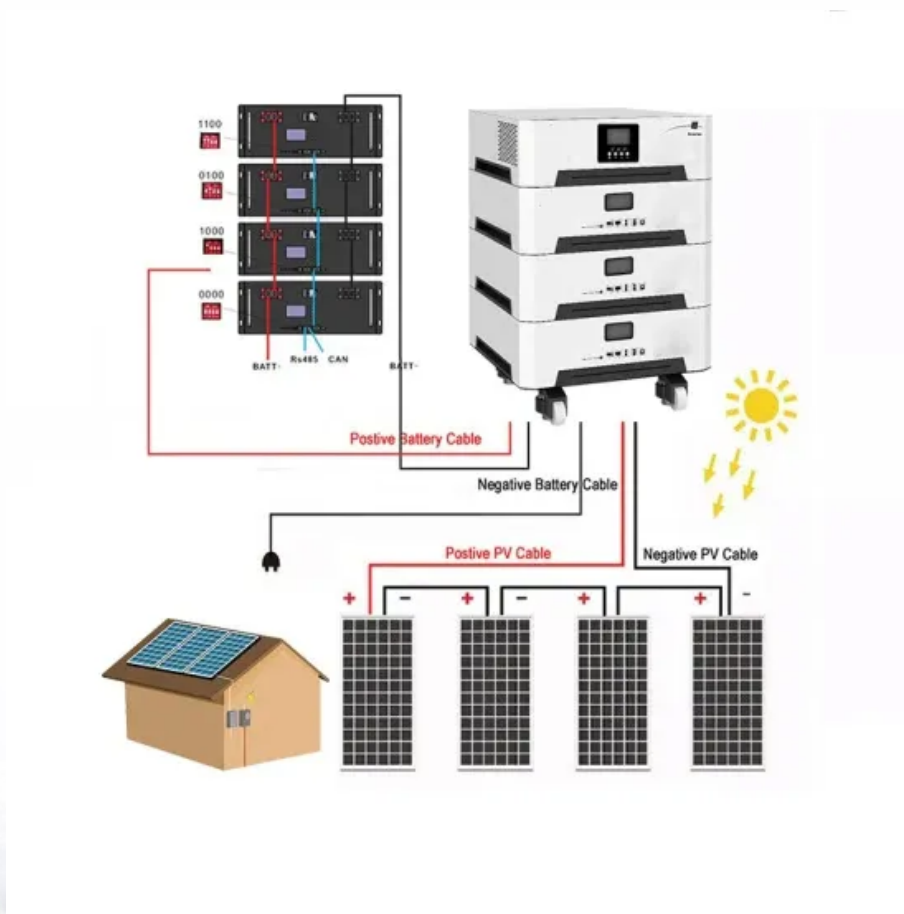


## SolarTech Power Solutions

# What are the base station communication equipment in South Africa



## Overview

---

Base stations receive signals from M.A.M.I communicators, displays them on the built-in screen and/or sends to our control room software. Below is a list of modules that can be added to a base:.

Base stations receive signals from M.A.M.I communicators, displays them on the built-in screen and/or sends to our control room software. Below is a list of modules that can be added to a base:.

Base stations receive signals from M.A.M.I communicators, displays them on the built-in screen and/or sends to our control room software. Telephone : Using available land line telephone network. Super fast transmission, less than a 10th of a second! Base stations receive signals from M.A.M.I.

- Each unit is able to accommodate up to 4 receivers, each on their own frequency.
- May be used either as a base station or as a repeater to extend the range of transmitters on the network.
- One unit provides backup for a base station or repeater.
- Advanced features, yet reasonably priced.
- 

BASE STATIONS ARE USED WITH ALL FSK VHF AND GSM EQUIPMENT GSM, VHF and TCP\_IP Repeater and Base Station. The FSK Multi-Router is a VHF/GSM- and TCP\_IP-based decoder and repeater for use with all FSK VHF and GSM equipment. 2025 © FSK. All rights reserved.

The NOVA range of power supplies is the most extensive by far. Each unit has been developed over the years incorporating value added features such as metering and adjustable voltage. These power supplies are in daily use throughout Africa and much of the Middle East. A very wide range of high.

SATLEC's top-selling mobile and base Two-Way Radios are trusted solutions for industries requiring powerful, reliable communication over extended distances. These radios are designed for vehicles and fixed locations, offering robust connectivity that ensures seamless coordination between teams in.

The DIB-R5 base station family is a constituent of the TETRA mobile radio system ACCESSNET-T IP and ensures the powerful and reliable mobile radio

coverage across a specific area. Supporting both TETRA Release 2 and TETRA Enhanced Data Service (TEDS), the DIB-R5 base station is as an attractive.

## What are the base station communication equipment in South Africa

---

### Contact Us

---

For catalog requests, pricing, or partnerships, please visit:  
<https://www.zegrzynek.pl>