

SolarTech Power Solutions

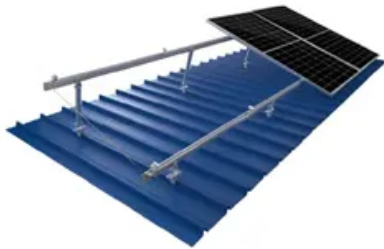
Solar base stations in the communications industry



TILE ROOF SOLAR MOUNTING SYSTEM



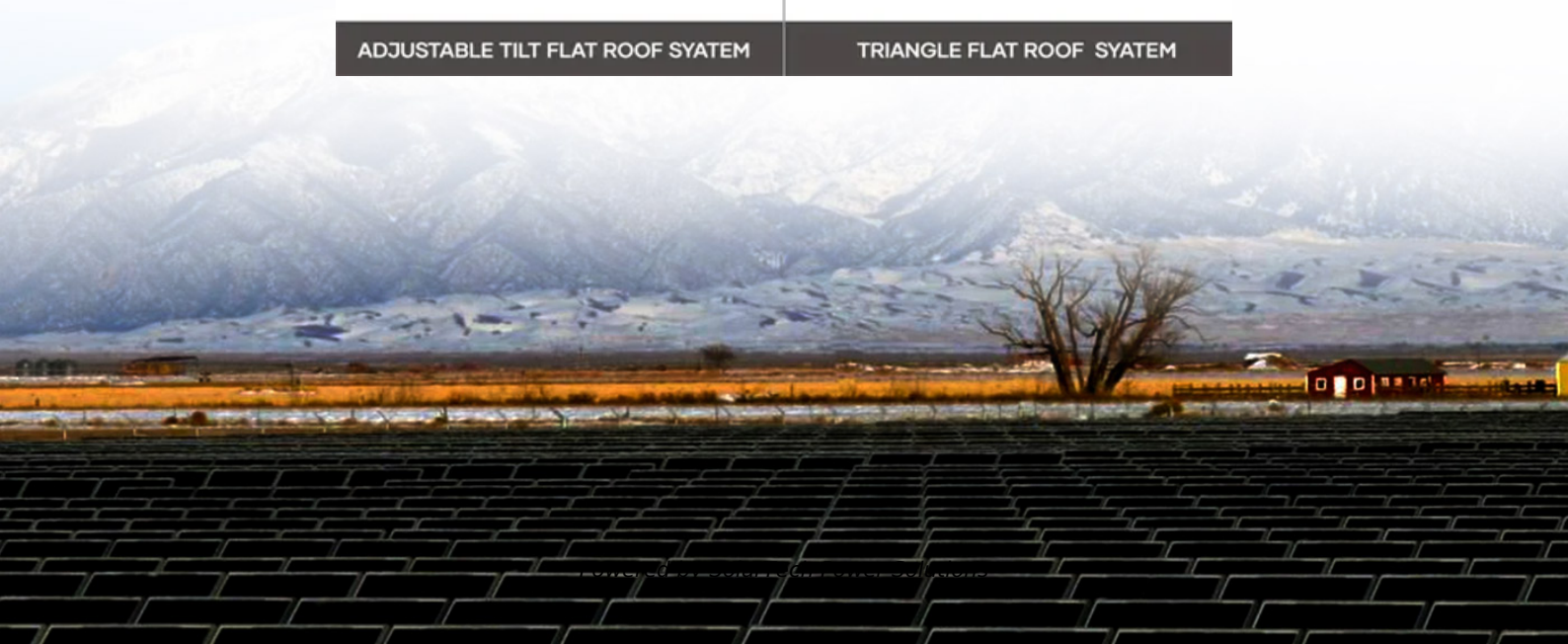
STANDING SEAM ROOF SYSTEM



ADJUSTABLE TILT FLAT ROOF SYSTEM



TRIANGLE FLAT ROOF SYSTEM



Overview

Are solar powered cellular base stations a viable solution?

Cellular base stations powered by renewable energy sources such as solar power have emerged as one of the promising solutions to these issues. This article presents an overview of the state-of-the-art in the design and deployment of solar powered cellular base stations.

Are solar powered base stations a good idea?

Base stations that are powered by energy harvested from solar radiation not only reduce the carbon footprint of cellular networks, they can also be implemented with lower capital cost as compared to those using grid or conventional sources of energy . There is a second factor driving the interest in solar powered base stations.

Can solar power improve China's base station infrastructure?

Traditionally powered by coal-dominated grid electricity, these stations contribute significantly to operational costs and air pollution. This study offers a comprehensive roadmap for low-carbon upgrades to China's base station infrastructure by integrating solar power, energy storage, and intelligent operation strategies.

What are the components of a solar powered base station?

solar powered BS typically consists of PV panels, batteries, an integrated power unit, and the load. This section describes these components. Photovoltaic panels are arrays of solar PV cells to convert the solar energy to electricity, thus providing the power to run the base station and to charge the batteries.

How does a solar base station work?

The main technological approach includes the integrated installation of solar panels, energy storage units, and controllers, with the specific transformation

plan displayed in Figure 6. In this scheme, the base station is powered by solar panels, the electrical grid, and energy storage units to ensure the stability of energy supply.

How does a base station work?

In this scheme, the base station is powered by solar panels, the electrical grid, and energy storage units to ensure the stability of energy supply. When there is a surplus of energy supply, the excess electricity generated by the solar panels is stored in the energy storage units.

Solar base stations in the communications industry

Contact Us

For catalog requests, pricing, or partnerships, please visit:
<https://www.zegrzynek.pl>